

- [Direct Marketing](#)

April 19, 2013



Web Search powered by **YAHOO! SEARCH**

charlotteobserver.com Web Archives

- [Weather](#)
- [Traffic](#)

[Subscribe](#)

79° Cloudy | [Forecast](#)
[Weather Alert](#)

- [I-77N](#) | [I-77S](#) | [I-85N](#) | [I-85S](#)
- [I-485N](#) | [I-485S](#) | [74E](#) | [74W](#)
- [Trouble Spots](#) | [Key Routes](#)

ROAD TRIPS | 2013 CAROLINAS TRAVEL GUIDE

[0 Comments](#)

- [Print](#)
- [Order Reprints](#)
- [Share](#)

Weekend in Asheville

79 people recommend this. Be the first of your friends.

Posted: Tuesday, Apr. 09, 2013



EWART BALL - AP

Asheville's Highland Brewing Co. launched the local craft beer scene. EWART BALL - AP
[Store](#)

BREAKFAST: Downtown's eclectic Early Girl Eatery (www.earlygirleatery.com) serves up seriously good food from early until late, with kids and kids-at-heart most welcome.

10 A.M.: The Thomas Wolfe Memorial State Historic Site (www.wolfememorial.com) features the Victorian childhood home of Thomas Wolfe, immortalized in his autobiographical novel, "Look Homeward, Angel." A tour starts at the modern visitor center behind the house. The site is on the "Asheville Urban Trail," a self-guided 1.7-mile loop that tells the story of Asheville's history, famous residents, and culture through 30 bronze statues.

LUNCH: Curate Tapas Bar (www.curatetapasbar.com) is the hottest downtown table for dinner, but locals swear by hot chef Katie

Button’s lunch and brunch menus as well – with a table or seat at the bustling bar much easier to score

1 P.M.: Just a half-mile from the heart of downtown, The Adventure Center of Asheville (www.ashevilletreetopsadventurepark.com) includes Asheville Zipline Canopy Adventures, Asheville Treetops Adventure Park, and Bike Adventures of Asheville. Ziplines overlooking the city, treetop bridges and challenges, and miles of single-track bike trails are among the highlights here.

4 P.M.: The city is called “Brewtopia” for good reason, thanks to the large number of microbreweries. Asheville Brews Cruise (www.ashevillebrewscruise.com) offers a variety of beer- and brewery-centric tours, including a classic “Mobile Cruise” that often visits Highland Brewing (www.highlandbrewing.com), Asheville’s original and largest brewery.

DINNER: Horizons Dining Room at The Grove Park Inn (www.groveparkinn.com) offers endless views and a menu that focuses on fresh ingredients from local farmers. Celebrating its 100th anniversary this year, Grove Park’s lobby alone is worth the short drive out of downtown.

BREAKFAST (WEEKEND BRUNCH): Corner Kitchen (www.thecornerkitchen.com) in busy Biltmore Village is a great place to start a “Biltmore” day at 9 a.m. sharp on weekends (7:30 a.m. weekdays).

10 A.M.: You can’t visit Asheville without heading to Biltmore (www.biltmore.com) and those in the know head there early to beat the crowds and reserve a specific tour time for Biltmore House. The mansion, grounds, and gardens are well worth an extended visit, but so is a visit to Antler Hill Village, which includes the most-visited winery in the nation, Biltmore’s Outdoor Adventure Center, shopping, casual dining and more.

LUNCH: After tasting wines, Antler Hill Village features two dining options: fresh local fare at Bistro and creative pub grub at Cedric’s Tavern.

1 P.M.: More Biltmore exploration.

4 P.M.: The River Arts District (www.riverartsdistrict.com) is well worth a stop to see artists work and meet them face-to-face. It’s also easy to meet other eclectic locals at the River Arts District’s Wedge Brewing (www.wedgebrewing.com), which opens daily mid- to late-afternoon and features popular pitchers of beer, frequent food trucks, live music, and more.

DINNER: The Blackbird (www.theblackbirdrestaurant.com) in downtown’s hip Aloft hotel is new and hot, thanks to locally-sourced farm-to-table fare.

WRAP UP: The Orange Peel (www.theorangepeel.net) offers up a packed live-music schedule. Lynn Seldon

 [Subscribe to The Charlotte Observer.](#)

Recommend

79 people recommend this. Be the first of your friends.

ADVERTISEMENT



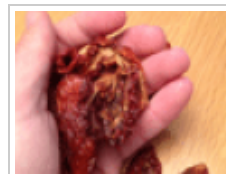
Asheville - New rule allows many North Carolina residents to get car insurance at half-price.



Surprisingly simple solution to help your joints. See why these ingredients are flying off shelves



Famous TV doctor calls this new woman's diet pill the "Holy Grail" of weight loss...



Testosterone solution never seen before is revealed...

 HIDE COMMENTS