

Destination Performance Report

Lodging & Visitor Overview - September 2019

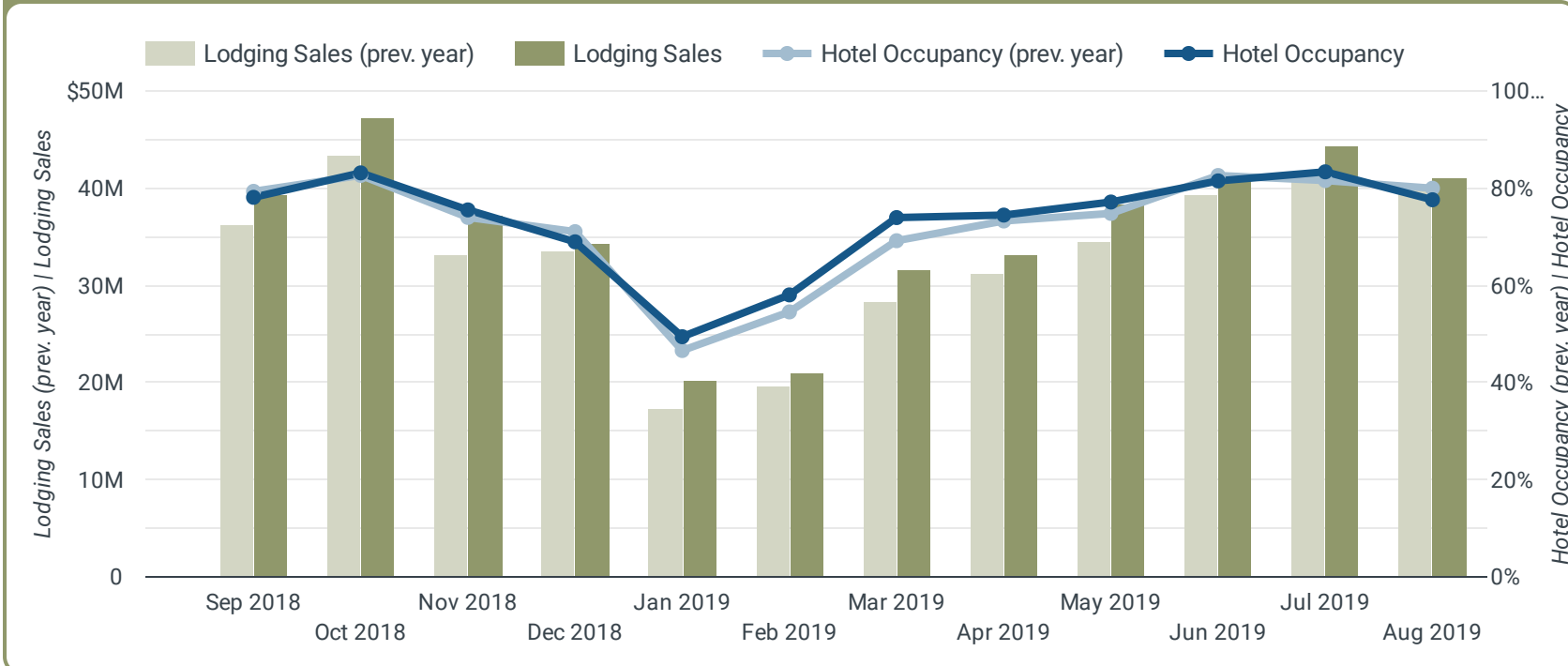
Lodging Sales \$41,027,538 (August) ↑ 2.8%	Hotel Occupancy* 77.6% (August) ↓ -3.0%	Hotel Demand* 191,611 (August) ↓ -1.5%	Hotel ADR* \$164.22 (August) ↑ 0.5%	Hotel RevPAR* \$127.46 (August) ↓ -2.5%
Airport Passengers 152,056 (August) ↑ 41.8%	Asheville Visitor Center 21,628 ↑ 13.3%	Pack Sq Visitor Center 1,011 ↑ 44.0%	Black Mtn Visitor Center 2,403 ↑ 3.1%	Travel Guide Requests 2,856 ↓ -19.5%

Lodging & Visitor Overview - Fiscal Year 19-20

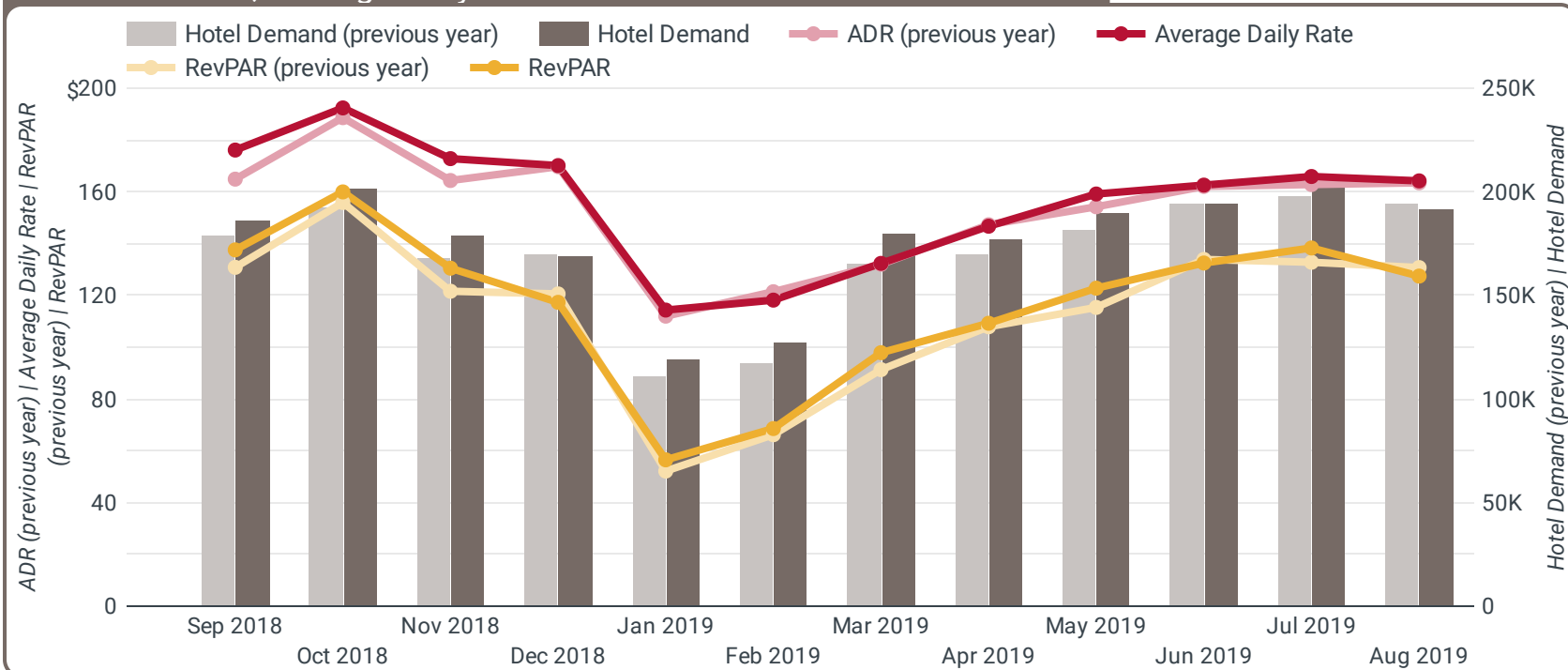
Lodging Sales \$85,413,861 ↑ 4.6%	Hotel Occupancy* 80.5% ↓ -0.4%	Hotel Demand* 397,421 ↑ 1.1%	Hotel ADR* \$165.10 ↑ 1.2%	Hotel RevPAR* \$132.88 ↑ 0.8%
Airport Passengers 315,325 ↑ 44.1%	Asheville Visitor Center 67,089 ↑ 4.0%	Pack Sq Visitor Center 3,123 ↑ 2.5%	Black Mtn Visitor Center 8,511 ↑ 0.1%	Travel Guide Requests 8,583 ↓ -9.4%

Lodging Sales and Hotel Occupancy*

* Source: STR, Inc. Republication or other re-use of this data without the express written permission of STR is strictly prohibited.



Hotel Demand*, Average Daily Rate* and Revenue Per Available Room*



Destination Performance Report

Short Term Rental Data - August 2019

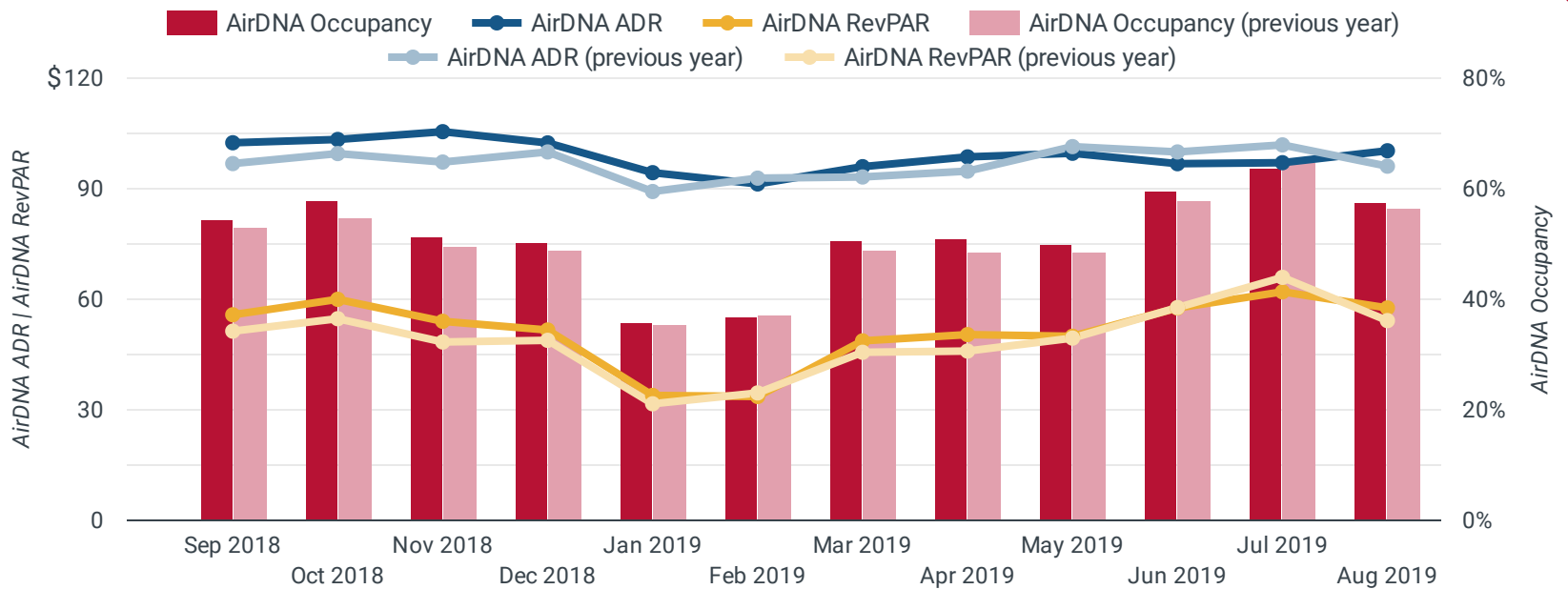
Occupancy	ADR	RevPAR	Demand
57.5%	\$100.30	\$57.64	115,369
↑ 1.9%	↑ 4.4%	↑ 6.3%	↑ 27.7%

Short Term Rental Data - Fiscal Year 19-20

Occupancy	ADR	RevPAR	Demand
60.7%	\$98.60	\$59.82	241,798
↑ 0.3%	↓ -0.5%	↓ -0.2%	↑ 27.8%

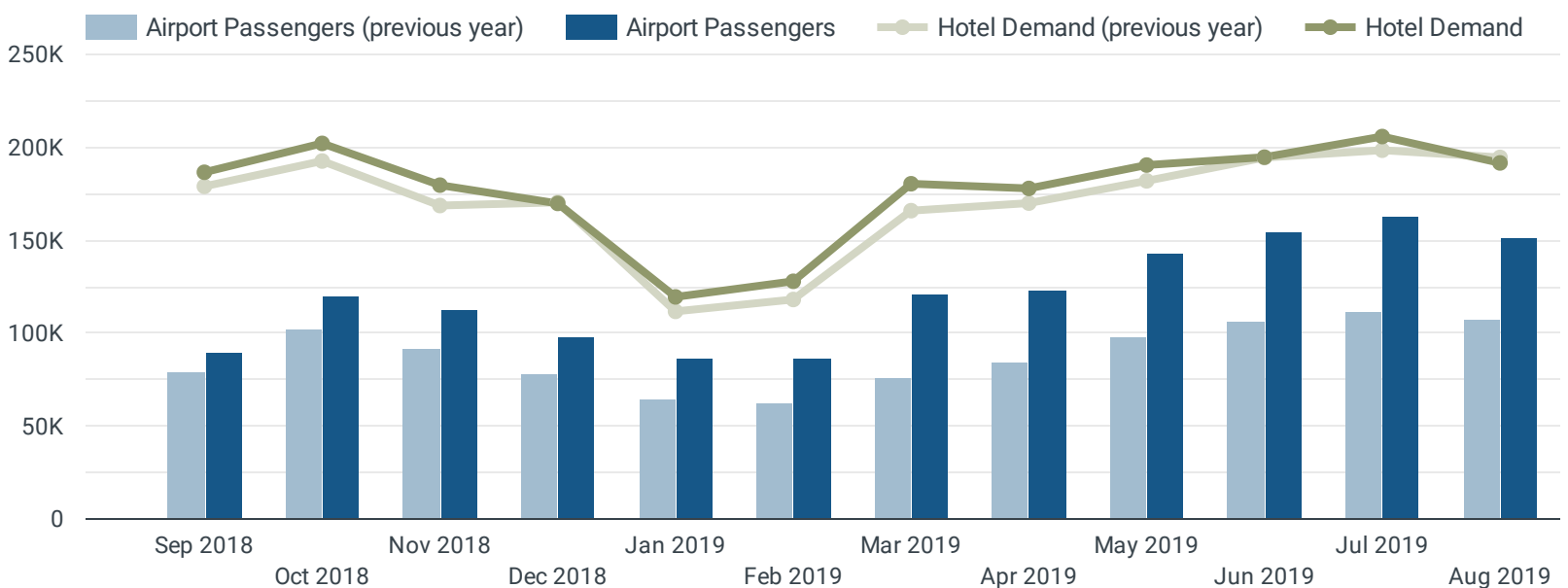
AirDNA ADR, RevPAR and Occupancy

* Short Term Rental Data Source: AirDNA

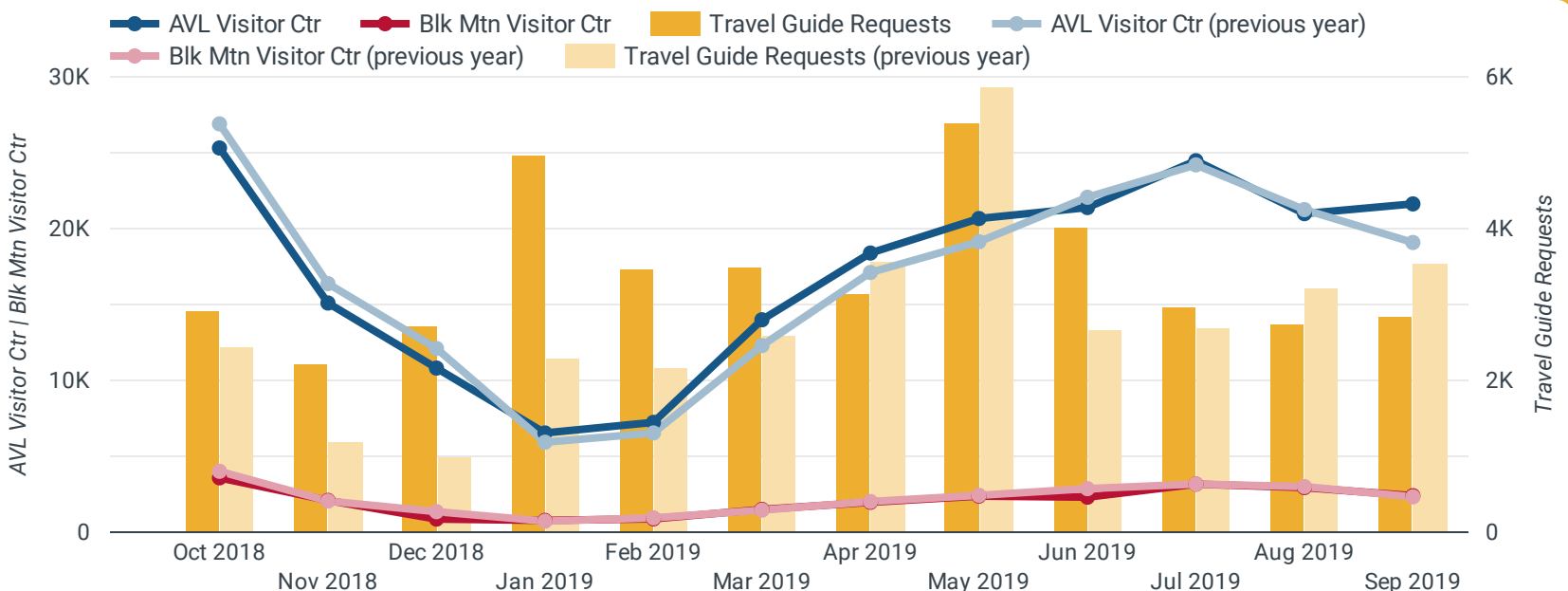


Airport Passengers vs. Hotel Demand*

* Source: STR, Inc. Reproduction or other re-use of this data without the express written permission of STR is strictly prohibited.



Visitor Center & Travel Guide



Sales Department Performance Report

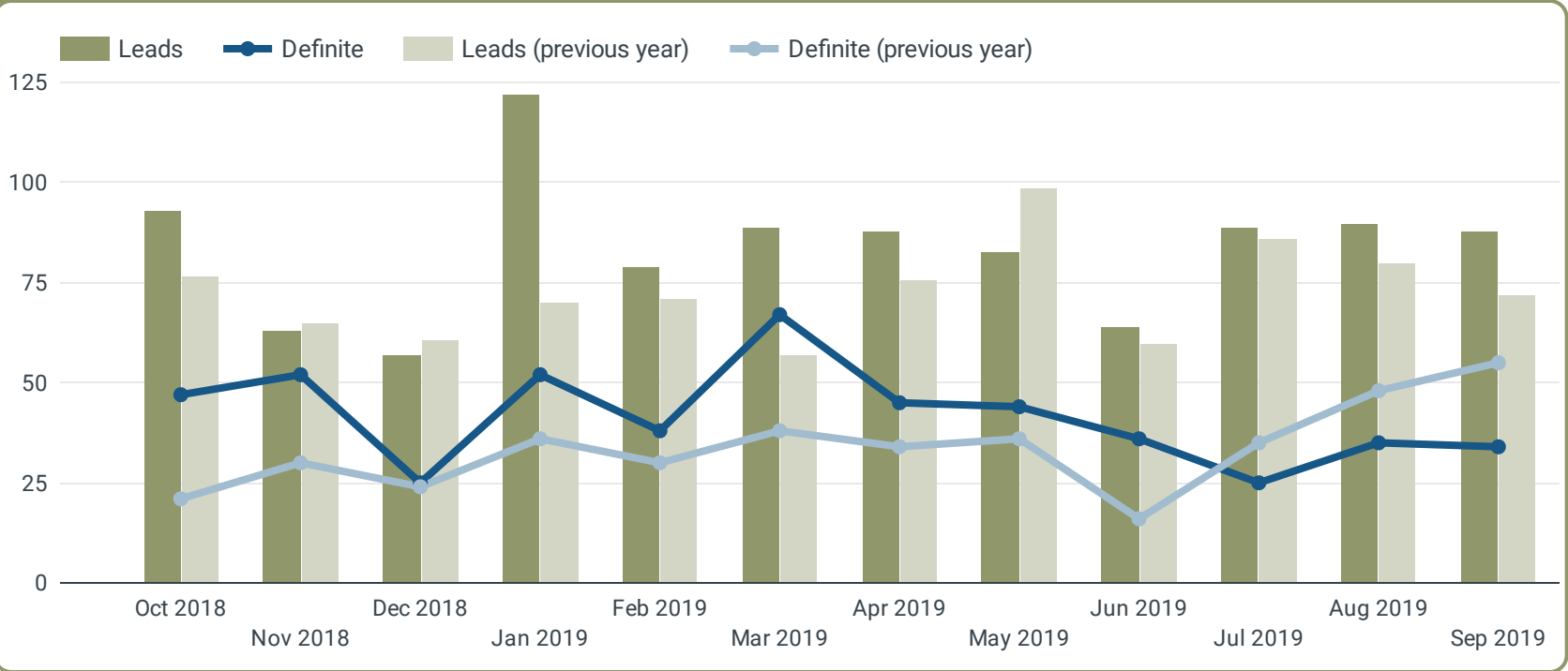
Sales Leads and Outreach - September 2019

Sales Leads Issued 88 ↑ 22.2%	Room Nights (Leads) 13,827 ↓ -15.1%	Leads Turned Definite 39 ↓ -32.8%	Room Nights (Definite) 6,768 ↑ 0.3%	Estimated Revenue \$1,605,815 ↑ 11.5%	
P2P Outreach 1,062 ↓ -7.0%	Indirect Outreach 18,659 ↑ 495.9%	Group Events 52 ↓ -1.9%	Room Nights Generated 8,491 ↓ -20.6%	Actualized Revenue \$3,221,438 ↑ 26.9%	Groups Served 46 ↓ -17.9%

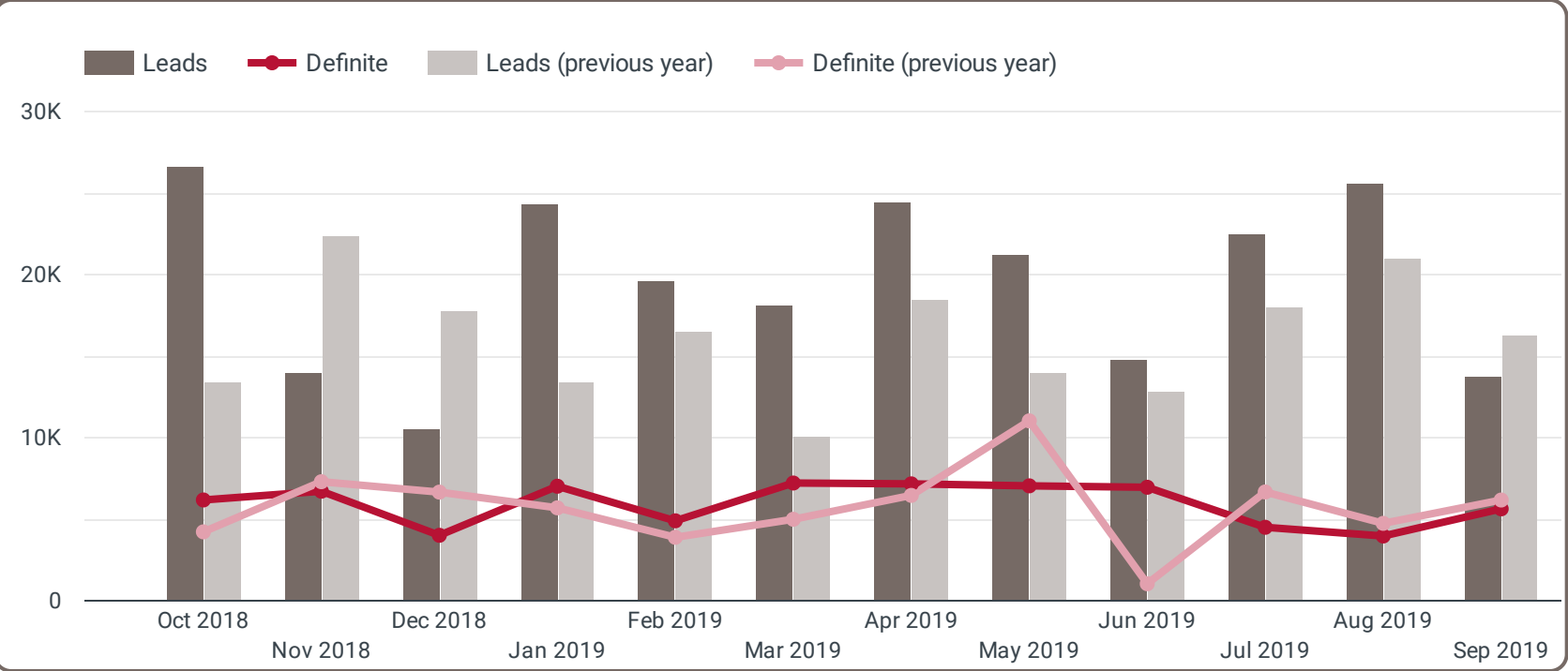
Sales Leads and Outreach - Fiscal Year 19-20

Sales Leads Issued 267 ↑ 12.2%	Room Nights (Leads) 61,996 ↑ 12.1%	Leads Turned Definite 101 ↓ -30.8%	Room Nights (Definite) 15,497 ↓ -25.7%	Estimated Total Revenue \$3,421,479 ↓ -22.1%	
P2P Outreach 3,283 ↓ -0.5%	Indirect Outreach 61,954 ↑ 353.4%	Group Events 127 ↑ 4.1%	Room Nights Generated 20,518 ↑ 6.2%	Actualized Revenue \$7,076,114 ↑ 63.6%	Groups Served 118 ↓ -9.2%

Sales Leads vs. Definite

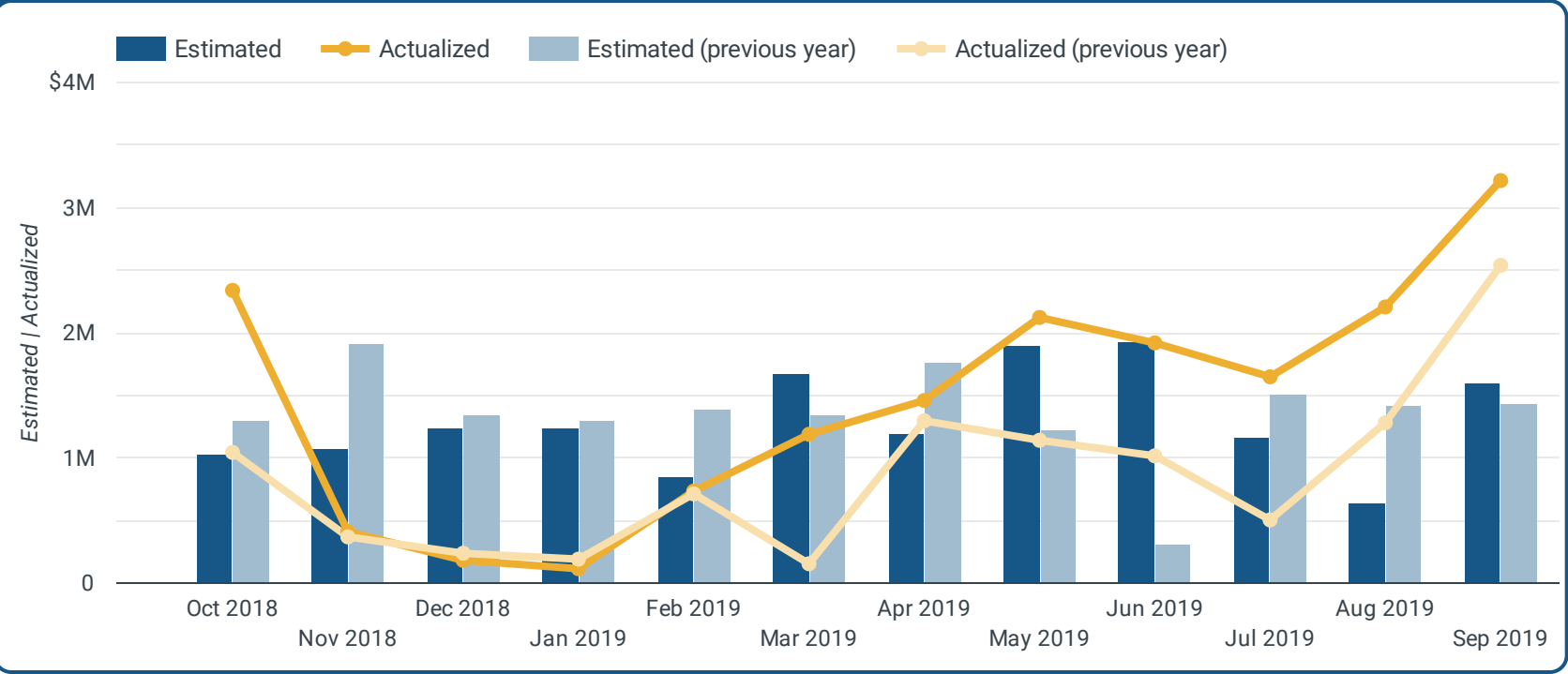


Room Nights Represented in Leads vs. Definite



Sales Department Performance Report

Estimated vs. Actualized Revenue



Sales Outreach 2018 by Month

	Month of Year ▾	Person-to-Person Outreach		% Δ	Indirect Outreach		% Δ
1.	Sep 2019	1,062		-7.0%	18,659		495.9%
2.	Aug 2019	1,161		-2.8%	36,255		281.1%
3.	Jul 2019	1,060		9.8%	7,040		591.6%
4.	Jun 2019	954		8.8%	15,929		45.0%
5.	May 2019	1,161		26.2%	5,010		-57.5%
6.	Apr 2019	1,064		-3.4%	12,346		185.0%
7.	Mar 2019	1,042		1.8%	0		-100.0%
8.	Feb 2019	919		-20.7%	3,630		-70.2%
9.	Jan 2019	1,099		-5.3%	14,667		325.9%

Group Events by Month and Room Nights Generated

	Month of Year ▾	Group Events This Month		% Δ	Room Nights Generated		% Δ
1.	Sep 2019	52		-1.9%	5,321		-49.5%
2.	Aug 2019	36		-12.2%	4,815		-28.4%
3.	Jul 2019	39		39.3%	4,071		114.9%
4.	Jun 2019	46		27.8%	6,086		85.5%
5.	May 2019	53		39.5%	6,693		63.2%
6.	Apr 2019	53		43.2%	3,819		-6.1%
7.	Mar 2019	39		77.3%	5,884		59.8%
8.	Feb 2019	19		35.7%	3,295		26.1%
9.	Jan 2019	10		66.7%	785		0.4%

Marketing Department Performance Report

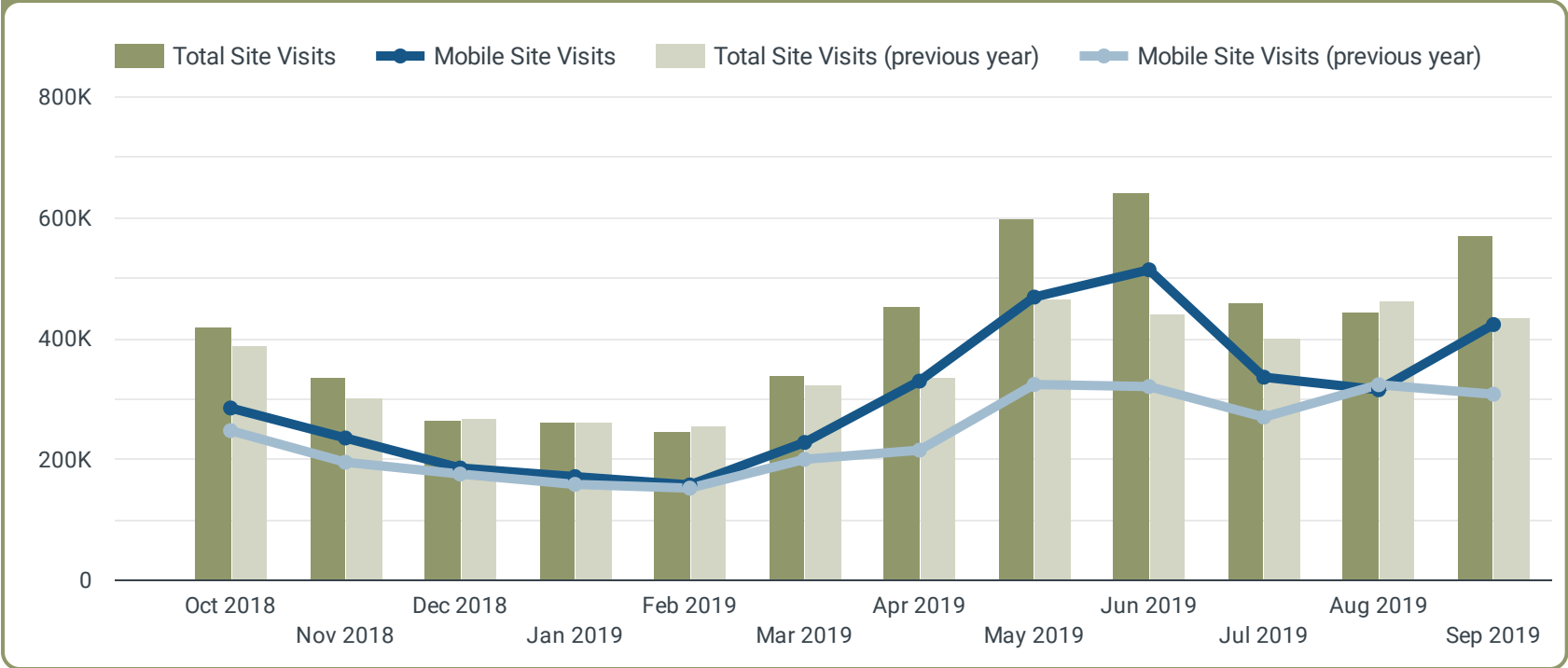
Marketing Metrics Overview - September 2019

Website Visits 573,240 ↑ 31.5%	Mobile Site Visits 425,448 ↑ 38.0%	aRes - Room Nights 95 ↓ -7.8%	aRes - Room Revenue \$17,014 ↑ 1.1%	Total Facebook Fans 292,991 ↑ 5.1%
PR Publicity Value \$2,475,604 (August) ↓ -5.0%	PR Estimated Impressions 54,171,342 (August) ↓ -84.8%	Significant Placements 25 (August) ↓ -61.5%	Media Touchpoints 52 ↓ -26.8%	Video Views 74,494 ↓ -66.6%

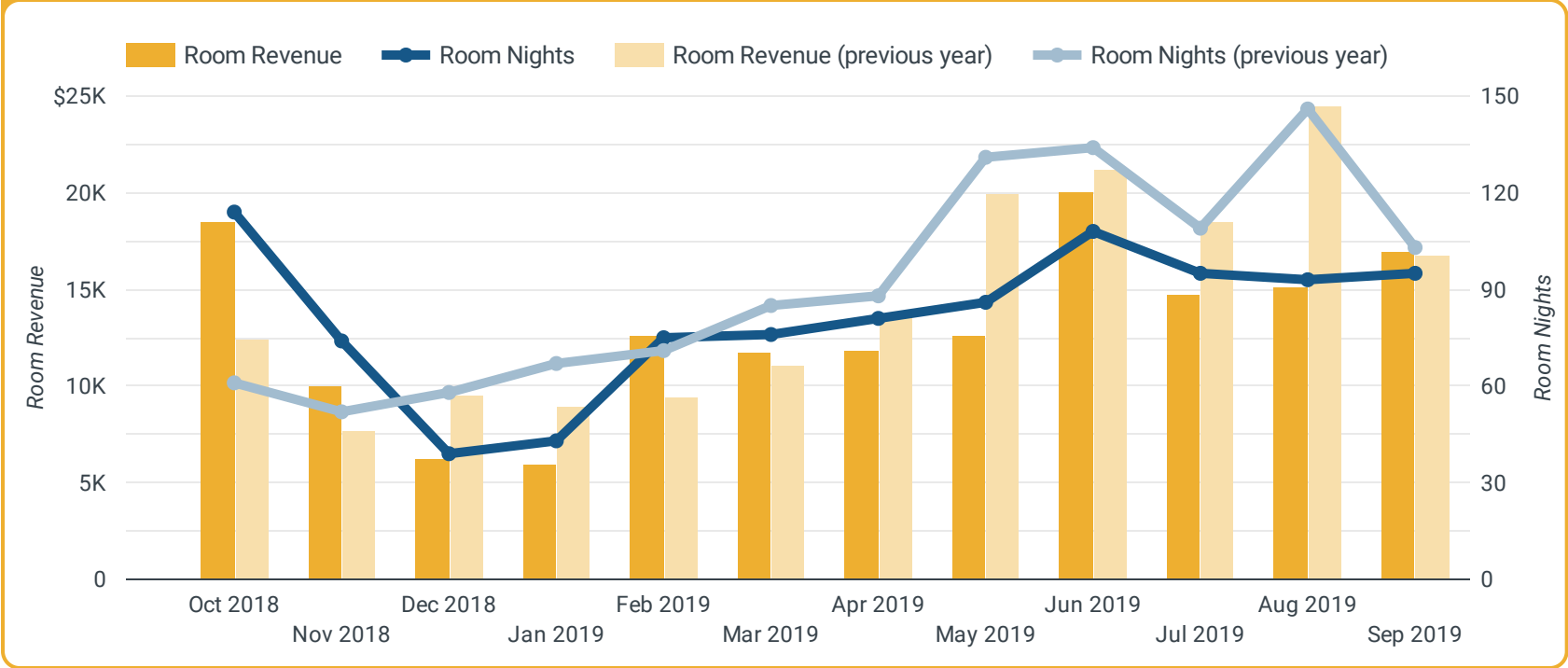
Marketing Metrics Overview - Fiscal Year 19-20

Website Visits 1,481,265 ↑ 13.9%	Mobile Site Visits 1,079,623 ↑ 20.0%	aRes - Room Nights 283 ↓ -20.9%	aRes - Room Revenue \$46,905 ↓ -21.6%	Avg. Total Facebook Fans 291,697 ↑ 5.3%
PR Publicity Value \$16,182,188 ↑ 293.4%	PR Estimated Impressions 217.65M ↓ -51.0%	Significant Placements 67 ↓ -28.0%	Media Touchpoints 170 ↑ 9.0%	Video Views 166,708 ↓ -59.6%

ExploreAsheville.com Web Stats



Online Reservation (aRes) Data



Marketing Department Performance Report

Print & Broadcast Value & Impressions

	Month of Year ▾	Publicity Value - Print/Broadcast	% Δ	Editorial Impressions - Print/Broadcast	% Δ
1.	Aug 2019	\$2,451,046	3%	5,621,869	-45.95%
2.	Jul 2019	\$13,650,534	848%	12,607,939	306.81%
3.	Jun 2019	\$12,356,822	3,153%	6,957,613	590.13%
4.	May 2019	\$418,473	-59%	919,227	-76.21%
5.	Apr 2019	\$1,530,658	-16%	4,192,779	-22.61%
6.	Mar 2019	\$3,565,638	21%	3,768,514	28.25%
7.	Feb 2019	\$3,802,323	25,395%	3,356,028	364.05%

Online Publicity Value and Impressions

	Month of Year ▾	Publicity Value - Online	% Δ	Estimated Impressions - Online	% Δ
1.	Aug 2019	\$24,558	-89%	48,549,473	-84.77%
2.	Jul 2019	\$56,050	-17%	150,871,671	84.51%
3.	Jun 2019	\$121,871	127%	167,438,295	162.98%
4.	May 2019	\$42,098	-74%	68,077,027	-75.05%
5.	Apr 2019	\$57,463	-78%	74,828,172	-86.68%
6.	Mar 2019	\$52,740	-64%	137,203,027	-45.41%
7.	Feb 2019	\$90,335	-74%	131,114,630	-70.41%

Media Placements & Touchpoints

	Month of Year ▾	Media Touchpoints / Interactions	% Δ	Significant Placements	% Δ
1.	Aug 2019	73	62.2%	25	-61.5%
2.	Jul 2019	45	12.5%	42	50.0%
3.	Jun 2019	69	0.0%	49	44.1%
4.	May 2019	52	-24.6%	22	-57.7%
5.	Apr 2019	94	-15.3%	29	123.1%
6.	Mar 2019	51	-26.1%	27	-32.5%
7.	Feb 2019	37	19.4%	24	-27.3%

Facebook Fans & Video Views (All Platforms)

	Month of Year ▾	Total Facebook Fans	% Δ	Video Views	% Δ
1.	Sep 2019	292,991	5.1%	74,494	-66.6%
2.	Aug 2019	291,606	5.4%	43,009	-73.0%
3.	Jul 2019	290,495	5.4%	49,205	60.1%
4.	Jun 2019	289,137	5.1%	77,507	82.5%
5.	May 2019	287,658	5.2%	317,862	454.2%
6.	Apr 2019	285,726	5.5%	549,234	803.7%
7.	Mar 2019	283,612	5.2%	66,965	-10.8%

Destination Performance Report - Glossary

Destination Performance Metrics

Lodging Sales - Total lodging sales for all property types reported for the previous month. Data is provided by the Buncombe County Finance Department.

Hotel Occupancy - Percentage of available rooms sold during the previous month. Occupancy is calculated by dividing the number of rooms sold by rooms available. Data is provided by Smith Travel Research.

Hotel Average Daily Rate (ADR) - A measure of the average rate paid for rooms sold for the previous month, calculated by dividing room revenue by rooms sold. Data is provided by Smith Travel Research.

Hotel Demand - The number of rooms sold in the previous month (excludes complimentary rooms). Data is provided by Smith Travel Research.

Hotel Revenue Per Available Room (RevPAR) - Total room revenue for the previous month divided by the total number of available rooms. Data is provided by Smith Travel Research.

Total Airport Passengers - Total monthly air traffic reported for the previous month. Data is provided by Asheville Regional Airport.

Asheville Visitor Center - Total monthly visitors to the Asheville Visitor Center. Data is provided by the Asheville Area Chamber of Commerce.

Pack Square Park Visitor Center - Total monthly visitors to the Pack Square Park Visitor Center. Data is provided by the Asheville Area Chamber of Commerce.

Black Mountain Visitor Center - Total monthly visitors to the Black Mountain Visitor Center. Data is provided by the Black Mountain-Swannanoa Chamber of Commerce.

Travel Guide Requests - The number of travel guides requested monthly via the website and leads. Data provided by Simpleview CRM.

AirDNA Listing room nights - the sum of all AirDNA listing nights that were available for rent times the number of rooms per listing. As of 2/1/19, AirDNA data includes both Airbnb and HomeAway short term rental data for 1/1/17 to present.

AirDNA Occupancy - Booked AirDNA listing room nights divided by available AirDNA listing room nights in the given month. This only counts listings as being available if they had one booked night in the month. Data is provided by AirDNA.

AirDNA ADR (Average Daily Rate) - Total AirDNA monthly revenue divided by the total number of AirDNA listing room nights booked in a given month. ADR includes cleaning fees but not other AirDNA service fees or taxes. Data is provided by AirDNA.

AirDNA RevPAR (Revenue Per Available Room) - Total AirDNA monthly revenue divided by the total number of AirDNA listing room nights available in a given month. Data is provided by AirDNA.

Sales Performance Metrics

Sales Leads Issued - Monthly tentative sales leads sent to hotel partners. Data is provided by Simpleview CRM.

Room Nights (Leads) - Monthly room nights represented in the tentative leads sent to hotel partners. Data is provided by Simpleview CRM.

Leads Turned Definite - Monthly leads sent to hotel partners that have resulted in a rooms agreement. Data is provided by Simpleview CRM.

Room Nights (Definite) - Monthly room nights represented in definite leads. Data is provided by Simpleview CRM.

Estimated Revenue - Estimated monthly revenue of definite leads. Data is provided by Simpleview CRM.

P2P Outreach - Monthly person-to-person interactions between the sales team and clients. Data is provided by Simpleview CRM.

Indirect Outreach - Monthly communications from the sales team to more than one client at a time. Data is provided by Simpleview CRM.

Group Events - The number of groups who were sourced through the bureau and met in Asheville during the given month. Data is provided by Simpleview CRM.

Room Nights Generated - Room nights generated by the groups who were sourced through the bureau and met in Asheville during the given month. Data is provided by hotel partners and compiled by Simpleview CRM.

Actualized Revenue - Room nights generated by the groups who were sourced through the bureau and met in Asheville during the given month. Data is provided by hotel partners and is compiled by Simpleview CRM.

Groups Serviced - Groups who met in Asheville who received or were offered additional planning services by Explore Asheville during the given month. Data is provided by Simpleview CRM.

Marketing Performance Metrics

Website Visits - Number of monthly website sessions to ExploreAsheville.com. Data is provided by Google Analytics.

Mobile Site Visits - Number of monthly website sessions from mobile and tablet devices to ExploreAsheville.com. Data is provided by Google Analytics.

aRes - Room Nights - Number of monthly room nights booked through aRes Travel third party booking engine at reservations.ExploreAsheville.com. Data is provided by aRes Travel.

aRes - Room Revenue - Total monthly room revenue for rooms booked through aRes Travel third party booking engine at reservations.ExploreAsheville.com. Data excludes cancellations and is provided by aRes Travel.

Total Facebook Fans - Total number of Facebook fans for the Visit Asheville Facebook page reported monthly. Data is provided by Facebook.

PR Publicity Value – Estimated ad equivalency cost of clips secured across multiple mediums reported for the previous month. Data is provided by Cision.

PR Estimated Impressions – The circulation of the publication and the estimated gross impressions for broadcast and digital articles by the placements reported for the previous month. Data is provided by Cision.

Significant Placements – Clips from online, print or broadcast media that Explore Asheville had a hand in securing or that feature Asheville predominantly and have a reach of certain threshold. Reported for the previous month. Data is provided by Cision.

Media Touchpoints – Monthly contact that members of the PR team had with various media outlets or journalists. Data is provided by Explore Asheville PR Team.

Video Views (All Platforms) - Figures for total monthly video views on all platforms. Data is provided by YouTube, Vimeo, Facebook, and Instagram and does not include advertising campaign views.

* **Source:** STR, Inc. Republication or other re-use of this data without the express written permission of STR is strictly prohibited.